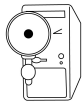


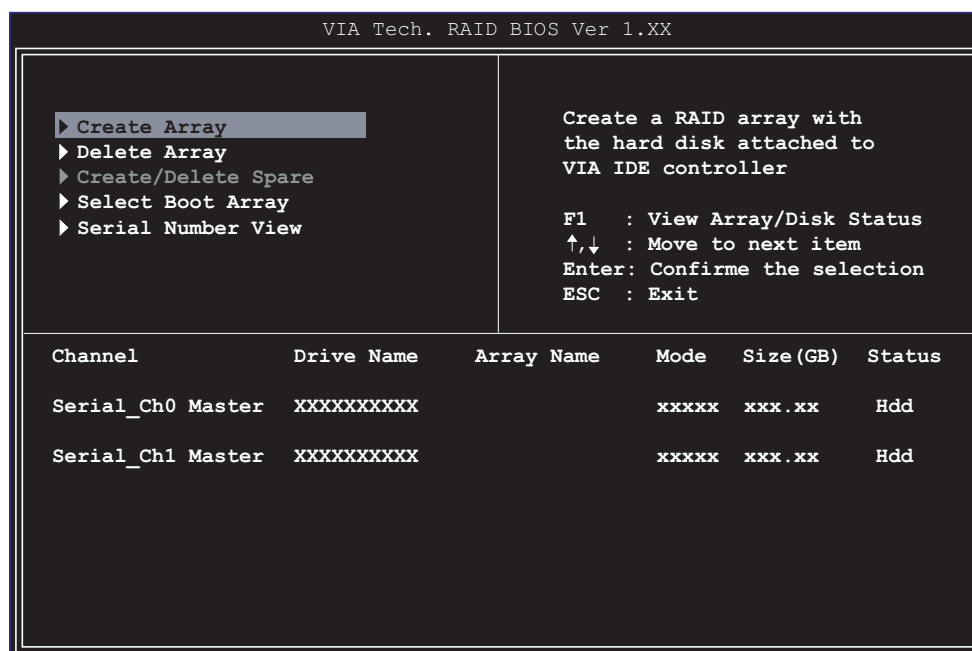
# ASUS® A7V600-X Technical Updates

## 3.4.2 Entering VIA® Tech RAID BIOS Utility (page 3-9)

1. Boot-up your computer.
2. During POST, press **<Del>** to enter the BIOS setup utility.
3. From the BIOS setup, select **Advanced -> PCI Configuration -> Onboard ATA Device First**. See page 2-22.
4. Set the **Onboard ATA Device First** field to [Yes]. Save settings and exit.
5. During POST, press **<Tab>** to enter VIA RAID configuration utility. The following menu options will appear.



The RAID BIOS information on the setup screen shown is for reference only. What you see on your screen may not be exactly the same as shown.



On the upper-right side of the screen is the message and legend box. The keys on the legend box allows you to navigate through the setup menu options. The message describes the function of each menu item. The following lists the keys found in the legend box with their corresponding functions.

F1 : View Array/Disk Status  
 ↑, ↓ : Move to the next item  
 Enter : Confirm the selection  
 ESC : Exit