

ASUS VR-100 / ASUS VR-100G

StereoGlasses

Enable Stereoscopic Mode

When selected, this enables you to use the stereoscopic mode when playing games or watching 3D videos.

Stereoscopic Glasses

Eyes

Distance between your eyes.

Distance

Distance between foreground and eyes.

Embossment

The effect to make objects virtually pop out of the screen.

Load Default

Restores the settings to their defaults.



NOTE This screenshot is provided only as an example and may not reflect the screen contents displayed on your system.

IMPORTANT! Before enabling stereoscopic mode and using your stereoscopic or VR glasses (ASUS VR-100G), make sure that your monitor can support 120Hz interlaced mode under the following display modes:

640 x 480 x 16 bits	640 x 480 x 32 bits
800 x 600 x 16 bits	800 x 600 x 32 bits
960 x 720 x 16 bits	
1024 x 768 x 16 bits	
1152 x 864 x 16 bits	

WARNING! To prevent discomfort and eye fatigue, DO NOT use your stereoscopic or VR glasses for an extended period of time. Take frequent short breaks to give your muscles and eyes a chance to rest by taking off your VR glasses and then looking up and focusing on distant objects.

ASUS[®]

Specifications and information contained herein are subject to change at any time without notice.

MANUAL REVISION 1.00 MAY 1999

Copyright © ASUSTeK COMPUTER INC. All Rights Reserved

ASUS VR-100 / ASUS VR-100G

StereoGlasses

Enable Stereoscopic Mode

When selected, this enables you to use the stereoscopic mode when playing games or watching 3D videos.

Stereoscopic Glasses

Eyes

Distance between your eyes.

Distance

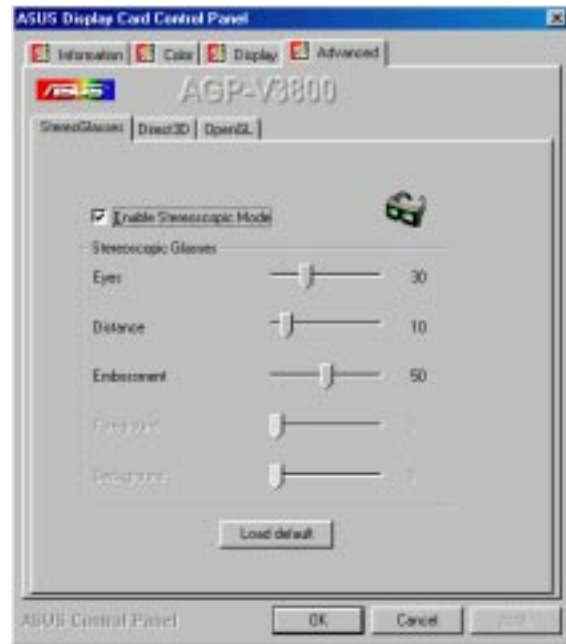
Distance between foreground and eyes.

Embossment

The effect to make objects virtually pop out of the screen.

Load Default

Restores the settings to their defaults.



NOTE This screenshot is provided only as an example and may not reflect the screen contents displayed on your system.

IMPORTANT! Before enabling stereoscopic mode and using your stereoscopic or VR glasses (ASUS VR-100G), make sure that your monitor can support 120Hz interlaced mode under the following display modes:

640 x 480 x 16 bits	640 x 480 x 32 bits
800 x 600 x 16 bits	800 x 600 x 32 bits
960 x 720 x 16 bits	
1024 x 768 x 16 bits	
1152 x 864 x 16 bits	

WARNING! To prevent discomfort and eye fatigue, DO NOT use your stereoscopic or VR glasses for an extended period of time. Take frequent short breaks to give your muscles and eyes a chance to rest by taking off your VR glasses and then looking up and focusing on distant objects.

ASUS[®]

Specifications and information contained herein are subject to change at any time without notice.

MANUAL REVISION 1.00 MAY 1999

Copyright © ASUSTeK COMPUTER INC. All Rights Reserved