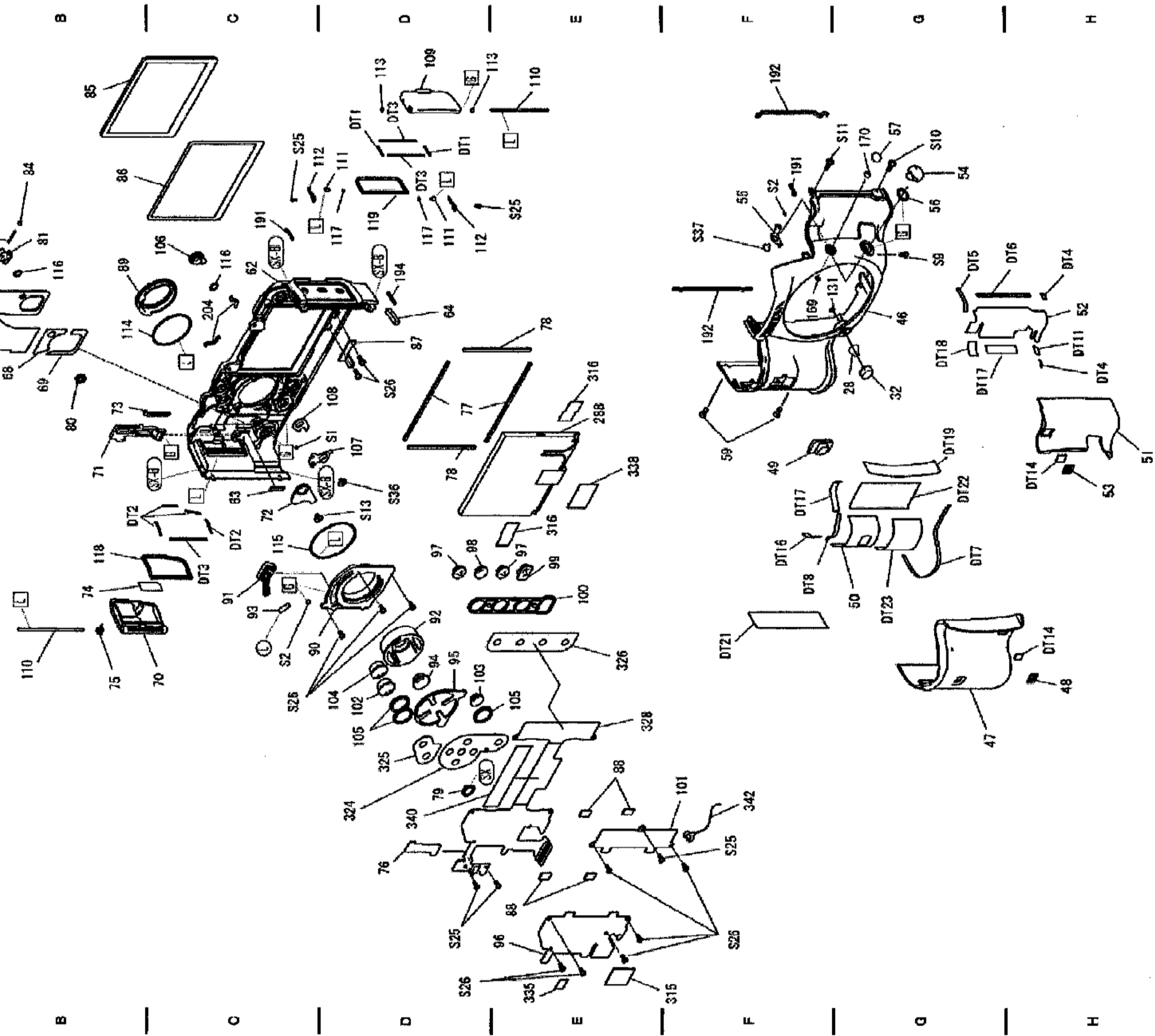


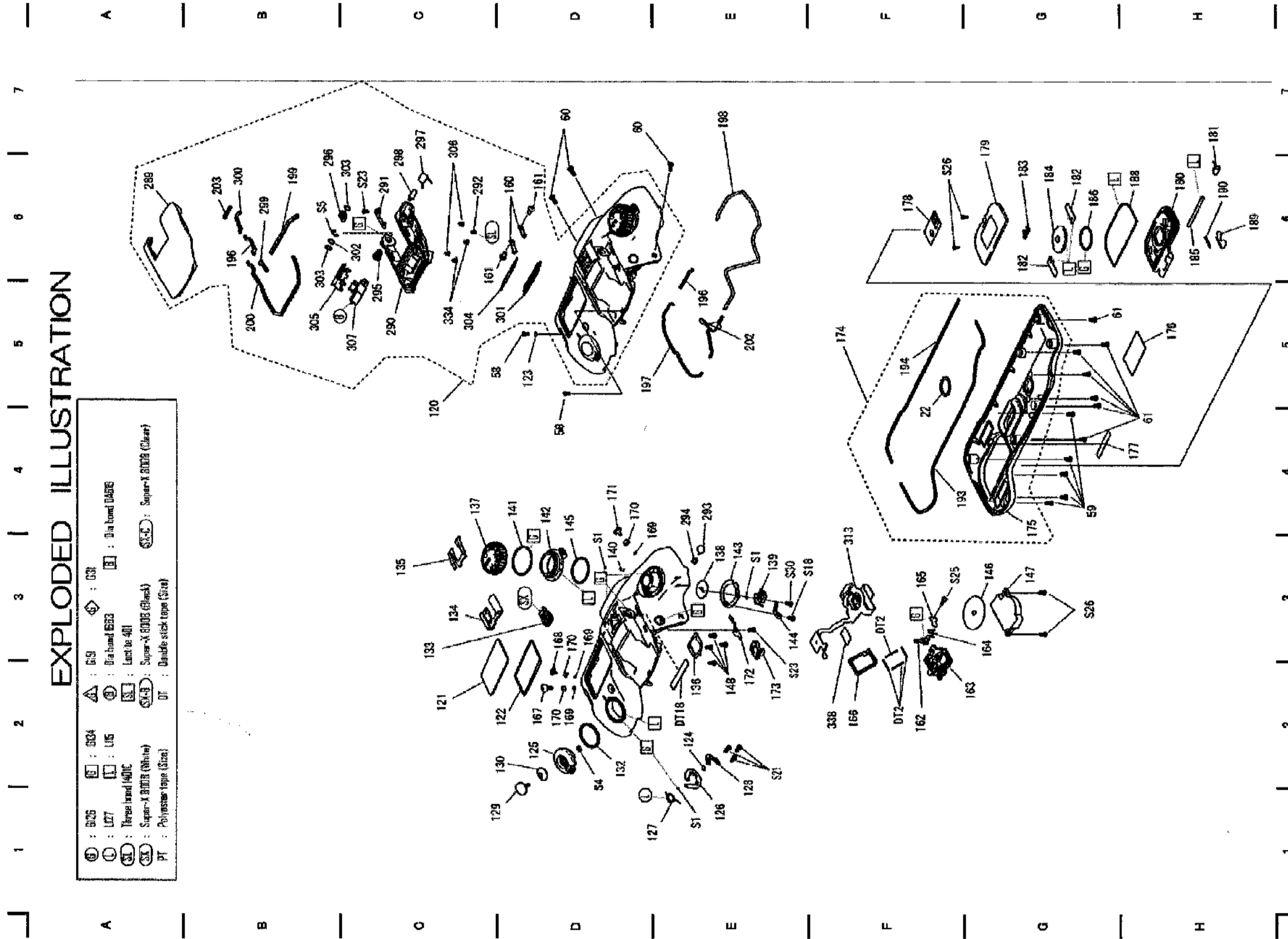
# EXPLODED ILLUSTRATION

⊕	: 5726	⊕	: 6154	⊕	: 631	⊕	: 631
⊕	: L27	⊕	: L85	⊕	: Dia band 1553	⊕	: Dia band DMS15
⊕	: Thread band 1401C	⊕	: Loctite 401	⊕	: Super-X 8003 (Black)	⊕	: Super-X 8008 (Clear)
⊕	: Super-X 8003 (White)	⊕	: Double stick tape (Size)	⊕	: DT	⊕	: Black tape (Size)
⊕	: Polyester tape (Size)						



## Product No.76830 PENTAX K10D

## Fig.1



# EXPLODED ILLUSTRATION

## Product No.76830 PENTAX K10D

## Fig.2

1 | 2 | 3 | 4 | 5 | 6 | 7

# EXPLODED ILLUSTRATION

⊕	: G26	⊕	: G34	⚠	: B51	⬠	: S3
⊙	: U27	⊕	: L15	⊕	: Dia brand 1653	⊕	: Dia brand 24618
⊕	: Three brand 1491C	⊕	: L41	⊕	: L41	⊕	: Super-A 8008 (Black)
⊕	: Super-A 8008 (White)	⊕	: Super-A 8008 (Black)	⊕	: Super-A 8008 (Clear)	⊕	: Double stick tape
PT	: Polyester tape						

